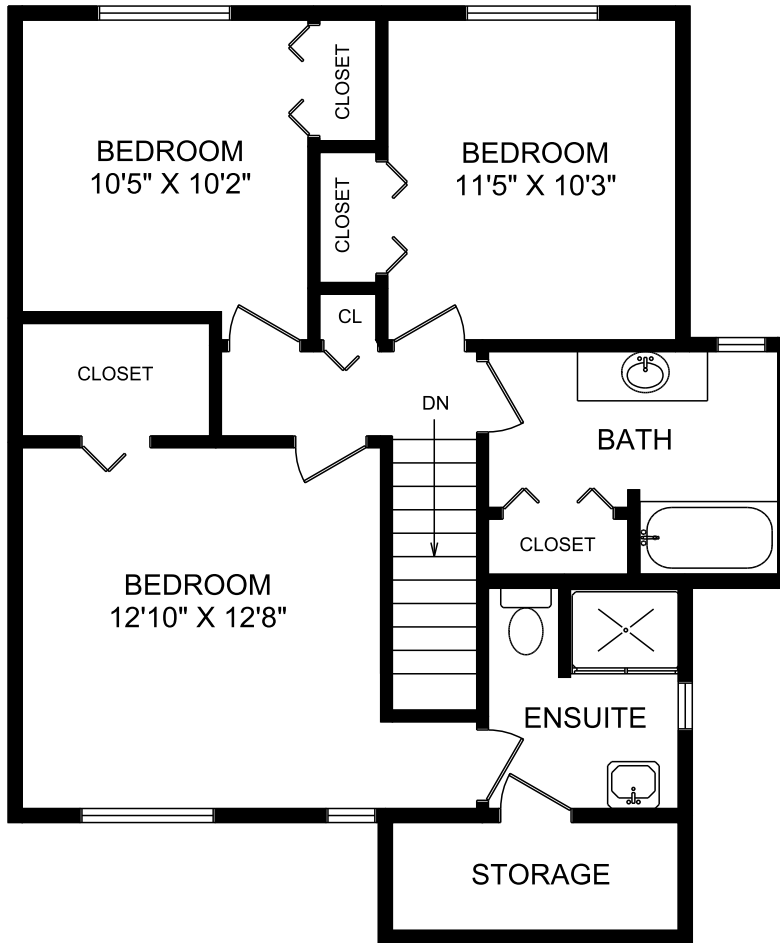


109-1945 MAPLE AVE SECOND FLOOR



	FINISHED SQ.FT.	UNFINISHED SQ.FT.	TOTAL SQ.FT.
MAIN FLOOR	669	0	669
LOWER FLOOR	737	48	785
TOTAL	1,406	48	1,454
PATIO		222	
GARAGE		236	
MEASURED JULY 16, 2008 ERIC WATTERS			



All information furnished regarding this property is from sources deemed reliable but no warranty or representation is made to the accuracy thereof.