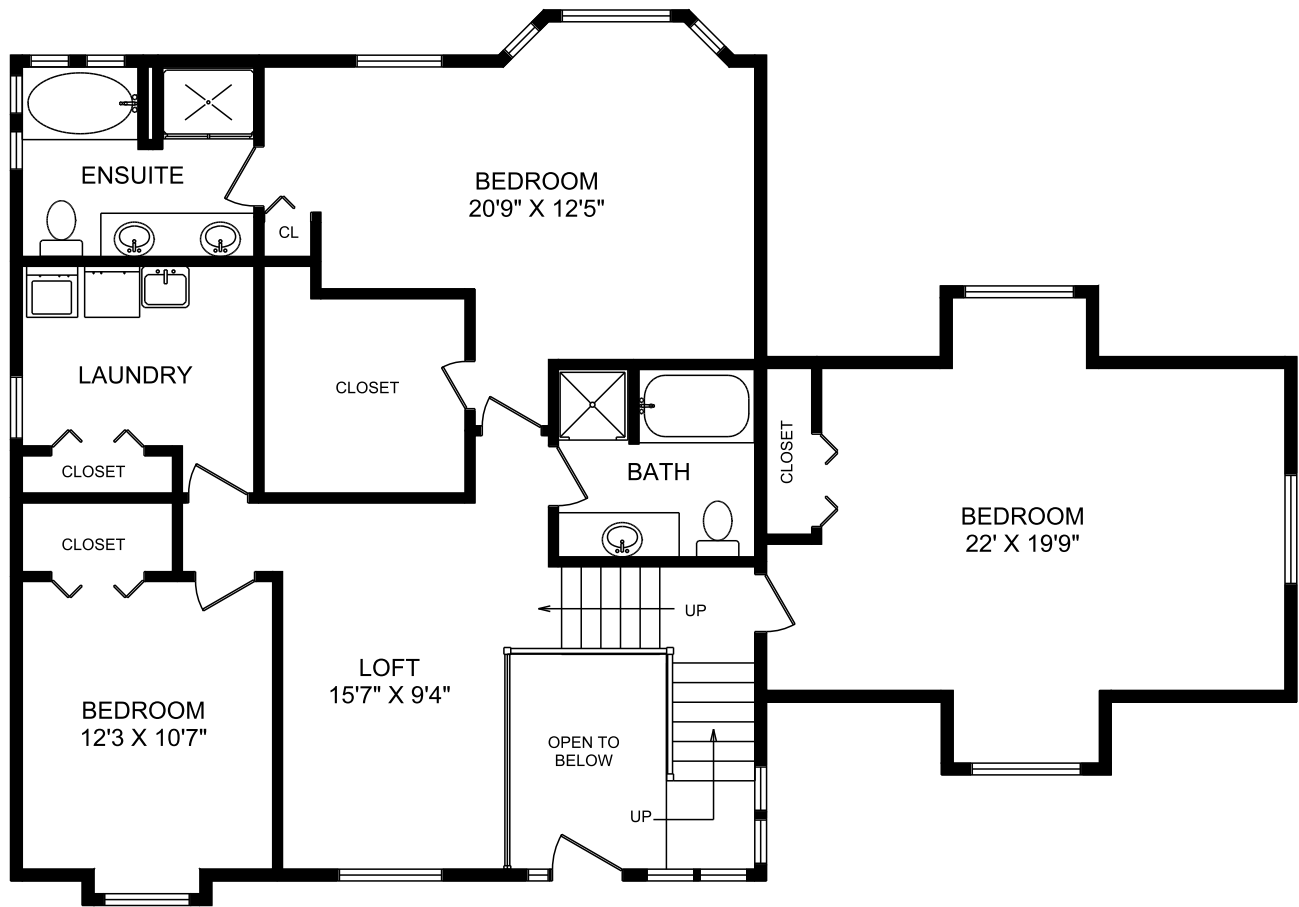
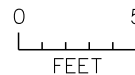


# 2629 OTTER POINT ROAD SECOND FLOOR



	FINISHED SQ.FT.	UNFINISHED SQ.FT.	TOTAL SQ.FT.
MAIN FLOOR	1,173	0	1,173
SECOND FLOOR	1,518	0	1,518
LOWER FLOOR	801	322	1,123
<b>TOTAL</b>	<b>3,492</b>	<b>0</b>	<b>3,814</b>
SHED		617	
PORCH		208	
PATIO		70	
DECK		185	
GARAGE		539	
MEASURED JULY 28, 2008 ERIC WATTERS			



All information furnished regarding this property is from sources deemed reliable but no warranty or representation is made to the accuracy thereof.